



**CRESCENT
RUBBER
CRAFTS**

“
Boundless
Mileage”
”

 www.crctread.com

AN ISO 9001 : 2008 Certified Company



Manufacturers of Tread Rubber and Gum



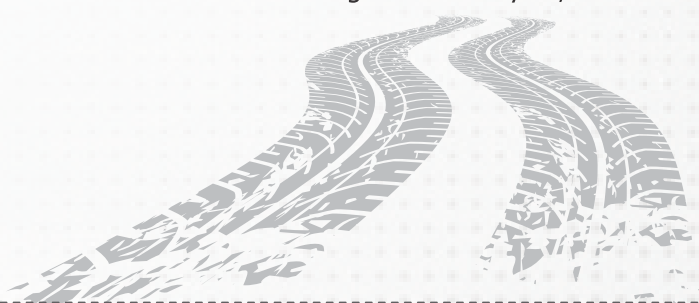
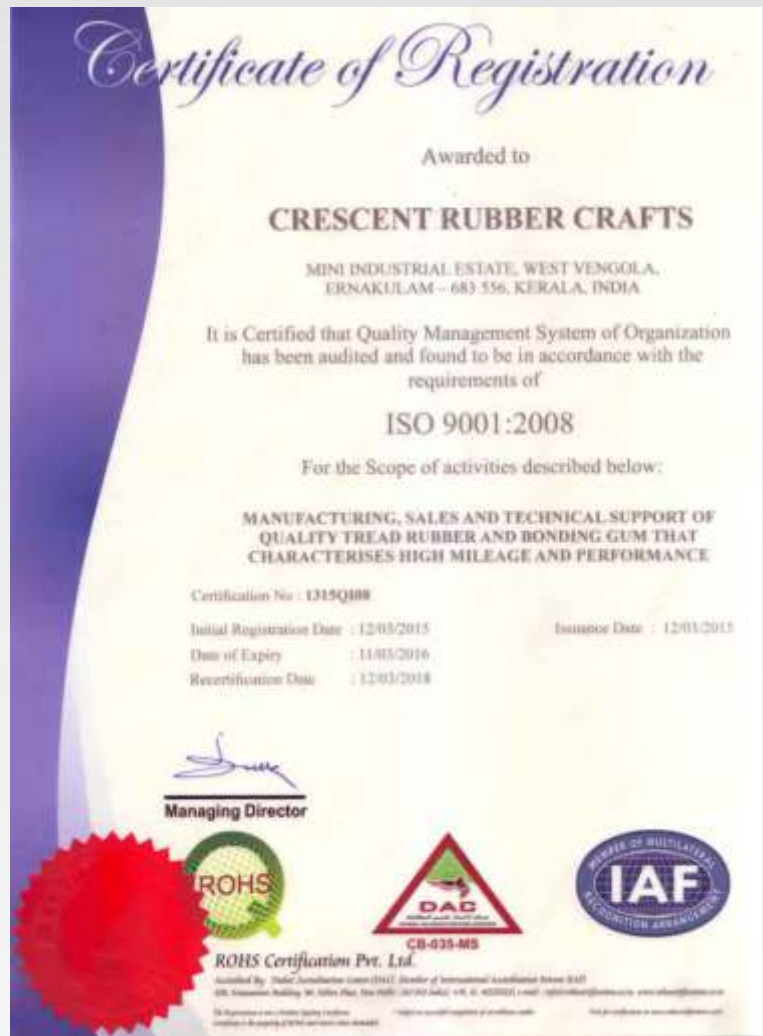
The seed for Crescent group was planted by Mr. P.M. Ahammed Unni in 1979, with the opening of Union Granites in Kochi, Kerala. The small stone crushing & quarrying unit would soon become one of the most important player in the construction field.

Over time, the business diversified and in the year 1989, the group forayed in to the tread rubber industry under the style "CRESCENT RUBBER CRAFTS". Later on Crescent Polymers (1998) and Crescent International Tyre Tread (2005) was added to the line, expanding its reach across other markets.

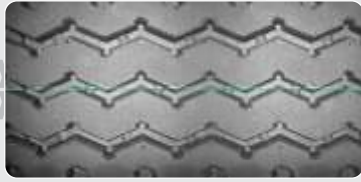
CRC is proud of its heritage and reputation for maintaining the quality throughout the period. Since the inception CRC has been part of the Indian transport land scape.

CRC precured treads provide fleet owners with one of the most cost effective and reliable tyre solutions on the market today.

Our process ensures total quality control and reliability. From our stringent testing of raw materials to final product Inspection our focus is to provide our customers the maximum mileage for their tyres, with out compromising our safety or quality standards.



CRE



Base Width (mm)	Approx. Weight (Kg)	
	Domestic	Export
168	8.2	---
205	11.0	12.5
210	11.2	---
220	11.5	12.75
230	---	13.00
240	---	13.00
250	---	12.90
310 (Super Singles)	---	18.50

CML



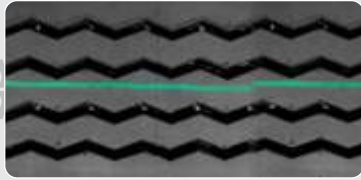
Base Width (mm)	Approx. Weight (Kg)
208	10.5
240	13.0
250	12.9

CRM



Base Width (mm)	Approx. Weight (Kg)
210	12.1
220	12.7
240	15.3

CRB



Base Width (mm)	Approx. Weight (Kg)
100	1.8
140	4.3
150	5.6 & 6.0
160	5.7
158	5.6
168	7.0
187	9.8
205	9.7 & 11

CR580



Base Width (mm)	Approx. Weight (Kg)
230	14.5
240	15.2
250	15.4
260	16.0

CR582



Base Width (mm)	Approx. Weight (Kg)
225	13.7
230	14.0
235	14.3

OUR OTHER PRODUCTS

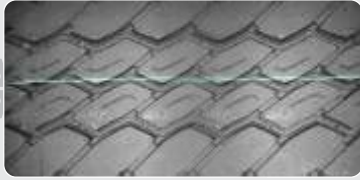
Conventional Tread Rubber

Camel Back | Slab

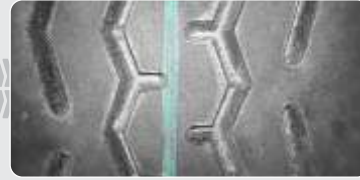
Bonding Gum

Black Vulcanizing Cement

Tyre Flap, Curing Flap & Rope Rubber

CL

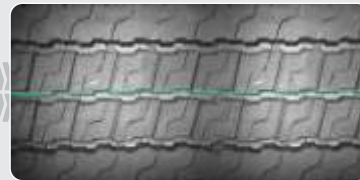
<u>Base Width (mm)</u>	<u>Approx. Weight (Kg)</u>
205	10.0
210	11.3
220	11.8

CRA

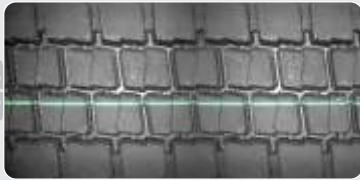
<u>Base Width (mm)</u>	<u>Approx. Weight (Kg)</u>
205	13.8
215	14.0
220	14.3

C - 95

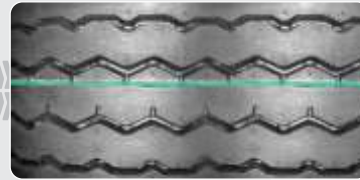
<u>Base Width (mm)</u>	<u>Approx. Weight (Kg)</u>
95	1.6

CM

<u>Base Width (mm)</u>	<u>Approx. Weight (Kg)</u>
205	10.9
210	11.3
220	11.8

CN

<u>Base Width (mm)</u>	<u>Approx. Weight (Kg)</u>
205	10.9
210	11.3
220	11.8

CRD

<u>Base Width (mm)</u>	<u>Approx. Weight (Kg)</u>
187	10.0
195	11.5
205	12.7

C - 100

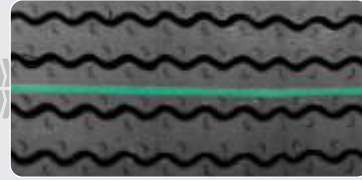
<u>Base Width (mm)</u>	<u>Approx. Weight (Kg)</u>
100	1.800

C4 - 145

<u>Base Width (mm)</u>	<u>Approx. Weight (Kg)</u>
145	4

CZ

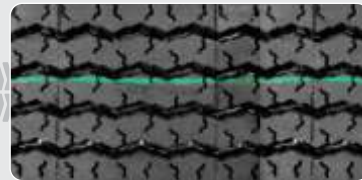
<u>Base Width (mm)</u>	<u>Approx. Weight (Kg)</u>
205	10.6
210	18.6
215	11.1
230	11.8

CRC

<u>Base Width (mm)</u>	<u>Approx. Weight (Kg)</u>
205	11.8
210	11.8
220	11.7

CM - 115

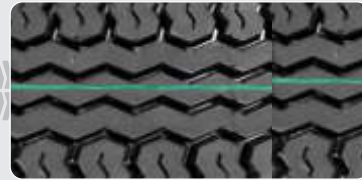
<u>Base Width (mm)</u>	<u>Approx. Weight (Kg)</u>
115	2

CRG

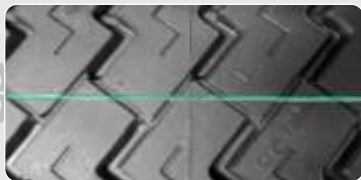
<u>Base Width (mm)</u>	<u>Approx. Weight (Kg)</u>
205	11.5
210	11.8
220	12.3

CJ

<u>Base Width (mm)</u>	<u>Approx. Weight (Kg)</u>
205	10.9
210	11.2

CRH

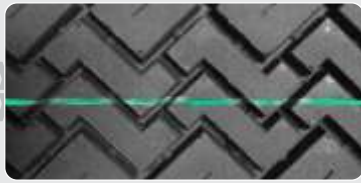
<u>Base Width (mm)</u>	<u>Approx. Weight (Kg)</u>
160	6.2
205	11.6
210	11.9
220	12.4

CK

<u>Base Width (mm)</u>	<u>Approx. Weight (Kg)</u>
177	07.8
210	11.8
205	11.5
217	12.5

CRJ

<u>Base Width (mm)</u>	<u>Approx. Weight (Kg)</u>
230	11.8

CA

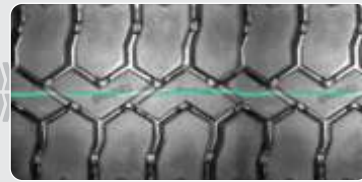
<u>Base Width (mm)</u>	<u>Approx. Weight (Kg)</u>
205	11.5
210	11.8

CB

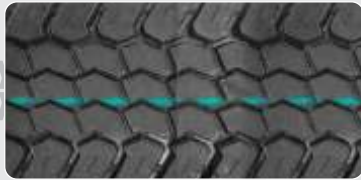
<u>Base Width (mm)</u>	<u>Approx. Weight (Kg)</u>
190	10.1
205	11.0
210	10.8

CD

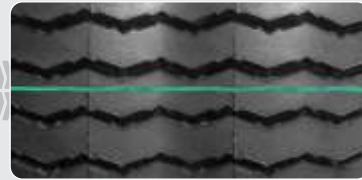
<u>Base Width (mm)</u>	<u>Approx. Weight (Kg)</u>
210	11.3
220	11.8
230	12.3

CP

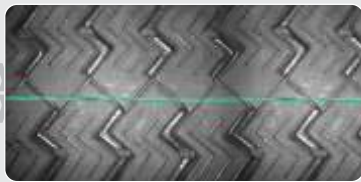
<u>Base Width (mm)</u>	<u>Approx. Weight (Kg)</u>
150	6.2
160	6.0
187	11.2
205	11.7

CF

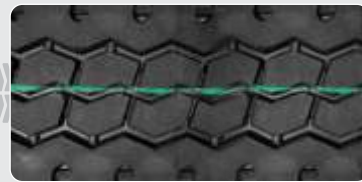
<u>Base Width (mm)</u>	<u>Approx. Weight (Kg)</u>
205	9.9
205	11.1
	11.4

CG

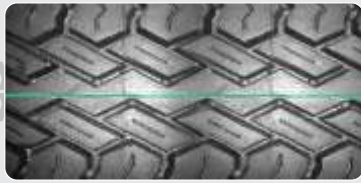
<u>Base Width (mm)</u>	<u>Approx. Weight (Kg)</u>
190	9.8
205	10.6
210	10.8

CH

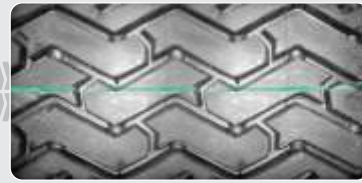
<u>Base Width (mm)</u>	<u>Approx. Weight (Kg)</u>
205	10.6
210	10.9
215	11.2

CI

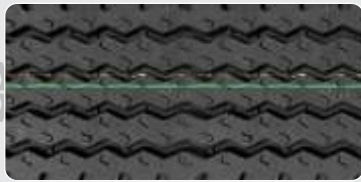
<u>Base Width (mm)</u>	<u>Approx. Weight (Kg)</u>
205	10.8
212	11.2
220	11.6

CO

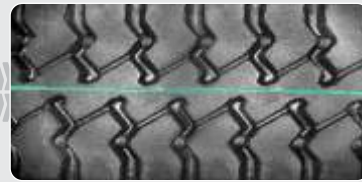
<u>Base Width (mm)</u>	<u>Approx. Weight (Kg)</u>
160	6.4

C-130

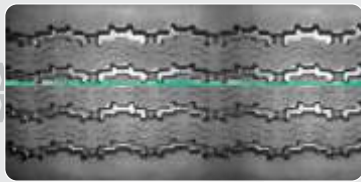
<u>Base Width (mm)</u>	<u>Approx. Weight (Kg)</u>
130	3.7

C11

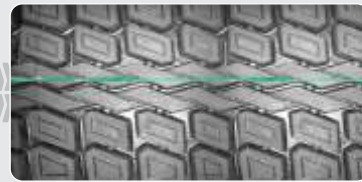
<u>Base Width (mm)</u>	<u>Approx. Weight (Kg)</u>
168	6.8
205	10.5
210	10.8

CQ

<u>Base Width (mm)</u>	<u>Approx. Weight (Kg)</u>
170	6.8
187	10.0
205	11.2 & 10.8
210	11.0

C24

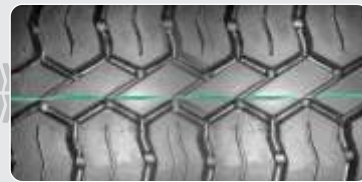
<u>Base Width (mm)</u>	<u>Approx. Weight (Kg)</u>
205	11.3
210	11.6
220	12.1

CR

<u>Base Width (mm)</u>	<u>Approx. Weight (Kg)</u>
205	10.6
210	10.9
220	11.3

CS

<u>Base Width (mm)</u>	<u>Approx. Weight (Kg)</u>
205	11.8
210	12.0

CT

<u>Base Width (mm)</u>	<u>Approx. Weight (Kg)</u>
187	10.3

Boundless Mileage

“ Made in
INDIA
for the
WORLD ”



**CRESCENT
RUBBER
CRAFTS**



BRANCH OFFICE

611, Near BP Petrol Pump,
Kharbhav - Thane, Mumbai,
Maharashtra - 421 302

Industrial Development Area,
Aluva - 683 112, Kerala, India

☎ +91 98460 60006 | +91 93881 07710

CRC MIDDLE EAST

P.O. Box 515000, Sharjah Media City,
Sharjah, United Arab Emirates

☎ +971 509 01 10 24 | +971 566 88 42 11